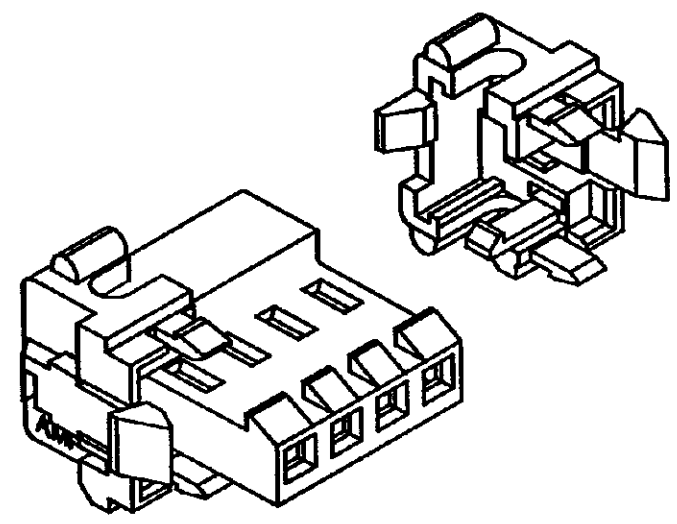
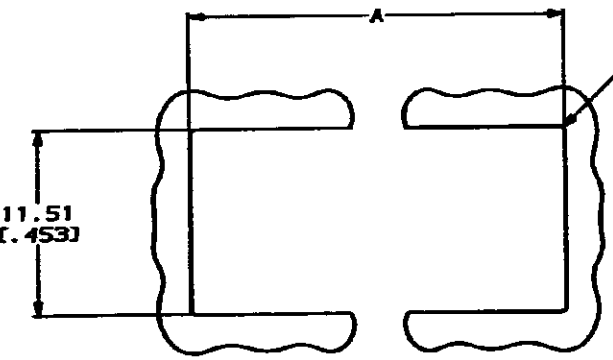


DRAWING MADE IN THIRD ANGLE PROJECTION
 THIS DRAWING IS UNPUBLISHED. RELEASED FOR PUBLICATION
 © COPYRIGHT 1981 BY AMP INCORPORATED. ALL DIMENSIONAL UNITS ARE IN INCHES.

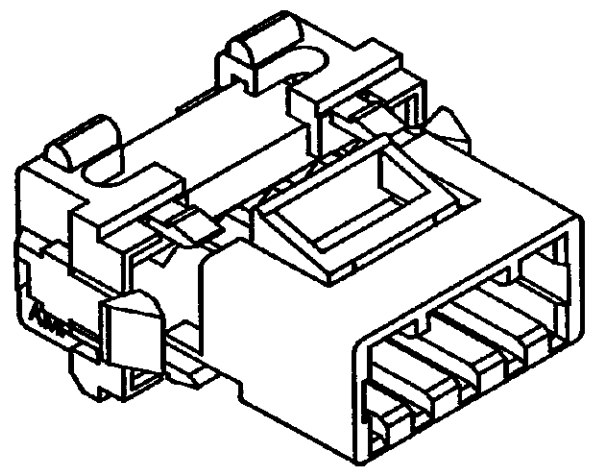
REV. NO.		DATE		DESCRIPTION	
CH	54			6	REV AND REDWN PER ECN CH-3503



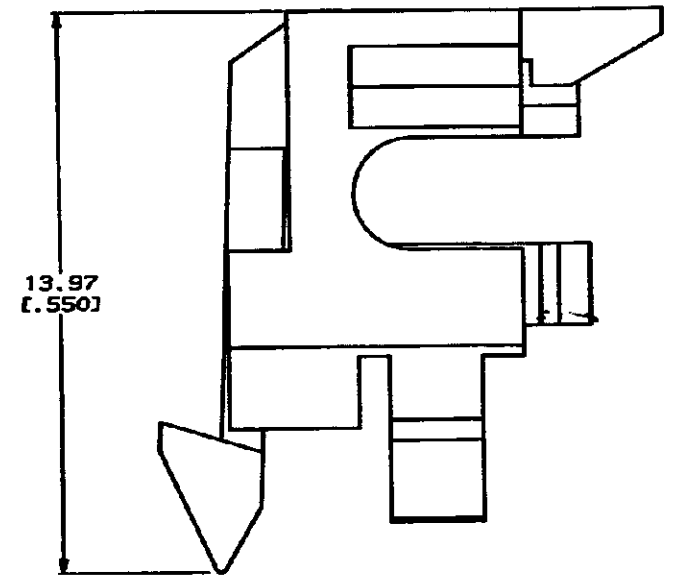
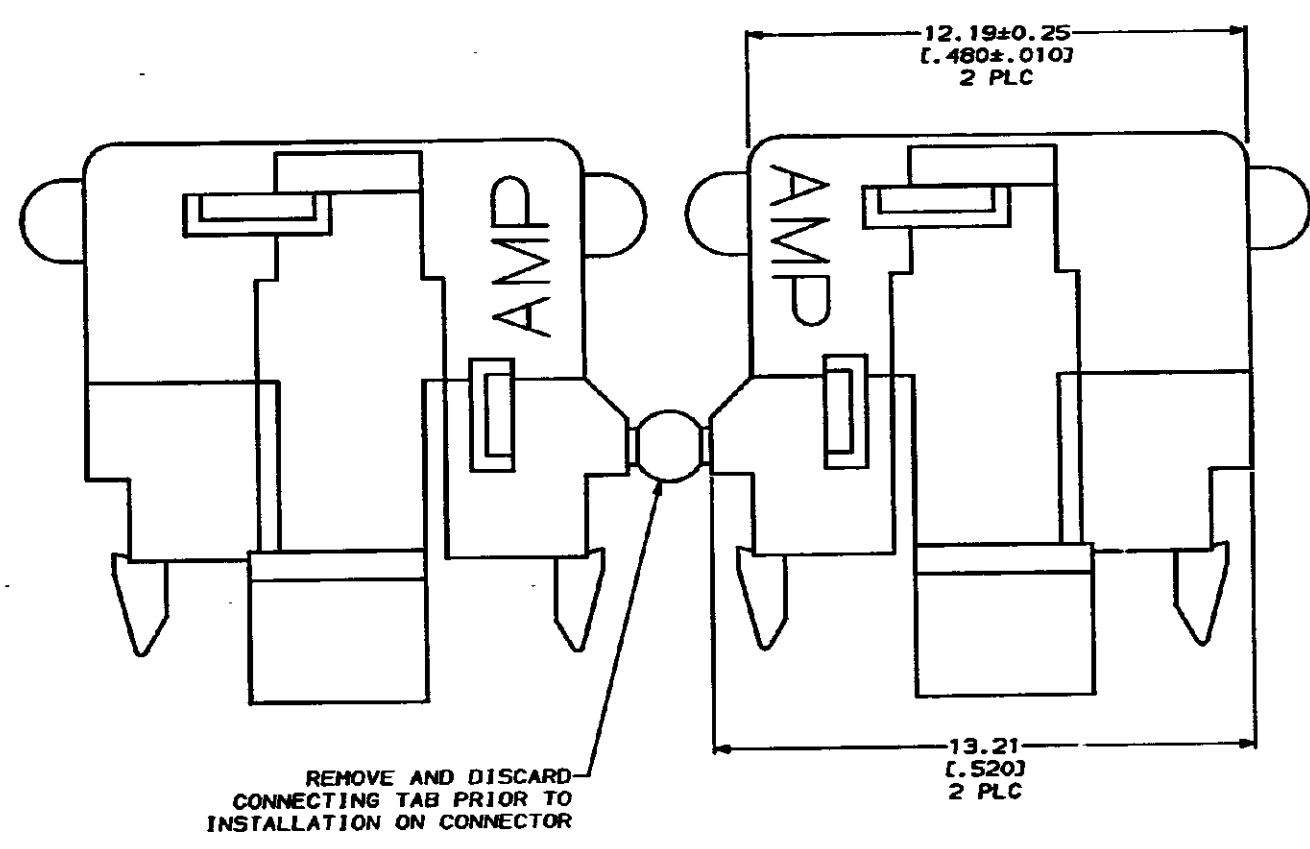
MTA 156 WIRE TO POST CONNECTOR WITH END CAPS INSTALLED
 (RECOMMENDED APPLICATION)



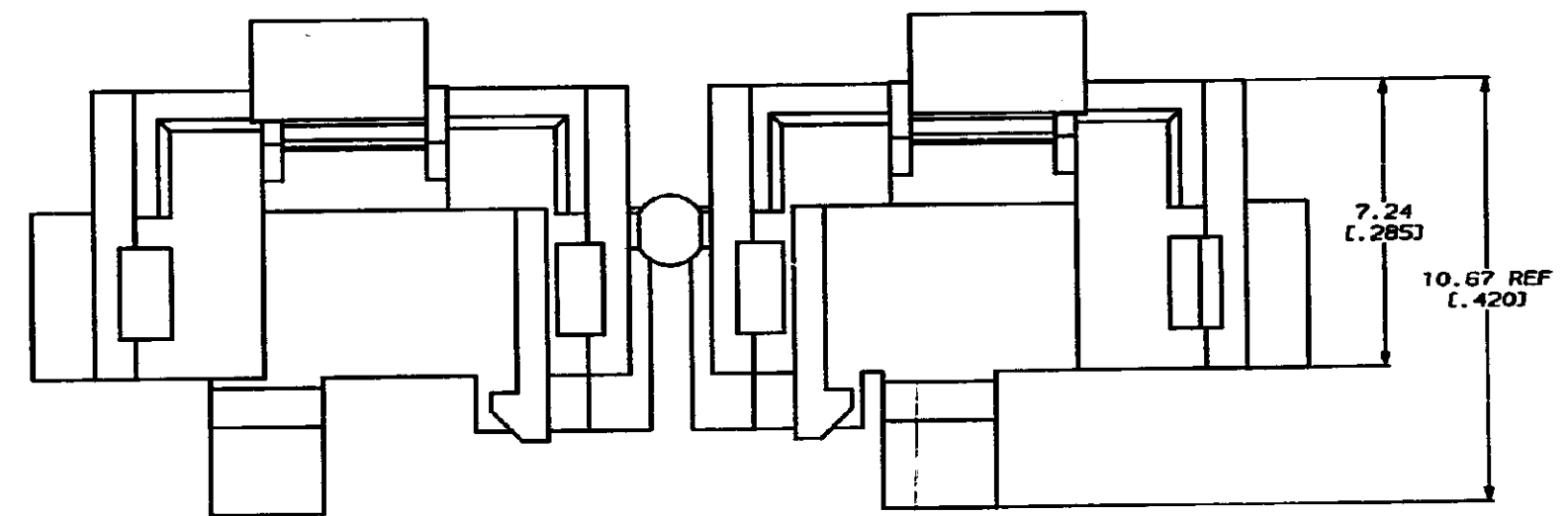
RECOMMENDED PANEL CUTOUT
 PANEL THICKNESS ± 1.70 (.067) MAX
 SCALE 4:1



MTA 156 POSTED CONNECTOR WITH END CAPS INSTALLED
 (ALTERNATE APPLICATION)



1. DIMENSIONS IN BRACKETS
 ARE IN INCHES.



	12 POSITION	24 POSITION	101.90 [4.012]
	54.36 [2.140]		
	42.47 [1.672]		
	30.58 [1.204]		
	22.66 [.892]	15 POSITION	66.24 [2.608]
	18.69 [.736]		
CONNECTOR SIZE	A	CONNECTOR SIZE	A

METRIC

DO NOT SCALE PRINT. UNLESS SPECIFIED DIMENSIONS IN MM (INCHES) TOLERANCES ON: 2 PLC DEC ± 3 PLC DEC ± 0.13 (.005) ANGLES ±		OR C. M. 8-27-91 R. D. 8-27-91 J. M. 8-27-91 APPRO DATE	AMP AMP Incorporated Harrisburg, PA 17105-3000
MATERIAL NYLON, UL 94V-2 BLACK		PRODUCT SPEC - APPLICATION SPEC - WEIGHT -	NAME END CAP, PANEL MOUNTING, MTA 156
FINISH -		SIZE D 00779	DRAWING NO 641440
		SCALE 10:1	SHEET 1 OF 1

CUSTOMER DRAWING